



## 4-H Project Entry Shelby County Fair

June 9th  
11 a.m. to 5 p.m.  
Floral Hall



### Adult Male Volunteers Needed for 4-H Camp!

Contact Regina or Mary Grace for  
more information

**FAMILY &  
CONSUMER  
SCIENCES**



*Creating Healthy & Sustainable Families*

Still time to register for  
**Walking Kentucky!**



Keep your brain  
working sharp - come  
to our new engaging  
program,  
**Wits Workout!**



## **AG PROGRAMS**

- ♦ *Reducing unwanted aquatic plant and algae growth in ponds*
- ♦ *Better pastures equals healthier herds*
- ♦ *Kentucky Woodland Owners Short Course*
- ♦ *What is driving the yield in UK corn and wheat yield contests?*



## *Horticulture*

- **Protecting your Trees from Cicadas**
- **When Bees Swarm**
- **Master Gardener Plant Sale**
- **Living with Alpha-gal Syndrome**
- **Invasive Pests Series**



M  
A  
Y

2  
0  
2  
5

J  
U  
N  
E



## Walking Kentucky

May 1 - June 18

Let's walk together this summer! There's still time to join this FREE challenge! All ages are welcome. Join as an individual or in a team. All physical activity counts as "steps". Keep track of your "steps" along the way and turn in a completed log at the conclusion.

Finish the challenge by turning in your completed log and program survey to receive a swag bag of goodies and be entered in a drawing for an annual pass to Clear Creek FAC!



Register online at <https://tinyurl.com/3dfkmjvj> or scan the QR code. You can also register on paper by stopping by the Extension Office (or just give us a call and we'll register you!).

### First Saturday Walkabout

Saturday, May 3, 8 - 8:30 a.m.

Saturday, June 7, 8 - 8:30 a.m.

Don't forget about participating in the monthly **First Saturday Walkabout!** On the first Saturday of **every month**, sign in at the front desk of Clear Creek FAC between **8 - 8:30 a.m.** and you will receive one FREE Day Pass per person to use at a later date. After signing in, you can walk on the trails, on the walking path, or on the inside walking track. Then, you can use your pass at a future date.



### Sewing Circle

Tuesday, May 6

1st Tuesday of each Month, 1 - 8 p.m.



Interested in learning how to sew, hone your sewing skills, or gather with sewing enthusiasts? Come join us on the 1st Tuesday of each month! Choose from two projects offered (an easier one and a more challenging one) and/or join us

for open sew where you can bring your own project to work on and ask for guidance from our Certified Master Clothing Volunteers.

For descriptions and photos of each project, pick up a flyer at the Extension Office or visit our Facebook page or website.

**May Projects:** Simple Zipper Bags (beginner)  
Selvage Zipper Bag (advanced)

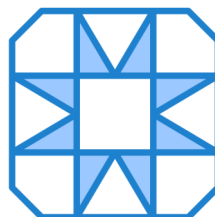
Please register in order to plan for supplies and food - call 502-633-4593 or email [elizabeth.coots@ukv.edu](mailto:elizabeth.coots@ukv.edu)

### Quilt Registry

Saturday, May 17

10 a.m. - 4 p.m.

The quilt registry is designed to document and preserve the history of Kentucky quilters and their creations for historical and research purposes. This registry focuses on quilts crafted before 1980. Registration is mandatory.



Register by calling 502-633-4593 or email [shelby.ext@uky.edu](mailto:shelby.ext@uky.edu)

*Sponsored by: Kentucky Heritage Quilt Society, Kentucky Cover Lovers, and Shelby County Extension Homemakers.*

### Laugh & Learn Play Dates

Wednesday, May 21, 5 p.m. Theme: Plants

Wednesday, June 25, 5 p.m. Theme: Insects

This free monthly playdate is for children ages 3-5 and their caregiver. The program engages children in playful activities that are specifically designed to prepare them for kindergarten. Your child will listen to a story, sing songs, make crafts, play games, and enjoy a healthy snack. Parents/guardians must also attend. This program is in partnership with Northside Preschool.



Please register - call 502-633-4593, email [elizabeth.coots@ukv.edu](mailto:elizabeth.coots@ukv.edu).

## Community Baby Shower

Friday, May 23, 11 a.m. - 1 p.m.

Shelby County Conference & Welcome Center  
219 7th Street, Shelbyville, KY

If you are expecting or have a child up to 12 months old, join the North Central District Health Department in Shelby County for a special celebration! Enjoy parent resources, giveaways,

and lunch. To be eligible for grand prizes, please arrive by 11:15 a.m.



To register for this event, scan the QR code or follow the link below:  
<https://shorturl.at/AyEUQ>

## Wits Workout

May 27 | June 24 | July 22 | August 26  
(4th Tuesday)  
10 - 11 a.m.

Join us for fun, interactive sessions designed to boost brain health and build social connections. Wits Workout offers engaging puzzles and activities that challenge your mind and encourage conversation—all in a supportive and fun group setting. Stay sharp, stay social, and have fun doing it!



Register now! Call 502-633-4593,  
email [elizabeth.coots@uky.edu](mailto:elizabeth.coots@uky.edu)

## Homemaker Annual Meeting & Chataqua Presentation:

*The Kentucky Derby: A celebration of Kentucky and its Heritage*

Thursday, May 29

10 a.m. Business Meeting

11 a.m. Program Presentation

12 p.m. Lunch

Everyone is welcome to attend this annual event. The guest speaker is **Todd Claypool from Kentucky Humanities** giving a Chataqua presentation on **The Kentucky Derby: A celebration of Kentucky and its Heritage**. *Claypool traces the origins and development of the Kentucky Derby, the world's most famous horse race and a powerful influence on Kentucky society and culture. He will use memorabilia collected during his 40-year passion for the race.*

There is no cost to attend the Chataqua presentation. Cost for the annual meeting lunch is \$15 per person. Registration required by May 16.

Please consider bringing quality items for the silent auction, and money to bid on the items! All proceeds will benefit the UK Ovarian Cancer Screening Program.

## Sit-n-Sew

1st Tuesday during the summer, 9 a.m. - 3 p.m.



Tuesday, June 3  
Tuesday, July 1  
Tuesday, August 5

During the summer, Master Clothing Volunteers will be available to assist with your sewing projects and questions in a different format. Join anytime during these dates and times. Bring your projects and your own lunch.

## Kids Renaissance Health Fair

Friday, June 27, 2 - 5 p.m.

Kentucky Renaissance Fair

955 Elm Street, Eminence, KY

Bring the whole family to this 2nd annual event!

Mental Health Services | Farmer's Market  
Smoking/Vaping Cessation |  
Food/Recipe Samples

Emergency/Law Enforcement Vehicles

Blood Pressure Checks |

Bounce Houses | Renaissance Fair Actors/Skits

Face Painting | Balloon Art

## Home Canning Workshops

Thursday, June 26, 10 a.m. - 12 p.m.

Tuesday, July 15, 6 - 8 p.m.

Come learn about the most current and safe practices for home canning. Only one workshop is necessary to attend as they will be the same. Please RSVP to plan for supplies. Call 502-633-4593 or email [elizabeth.coots@uky.edu](mailto:elizabeth.coots@uky.edu)

Articles By:

*M. Elizabeth Coots*

Elizabeth Coots  
Cooperative Extension Agent for  
Family & Consumer Sciences



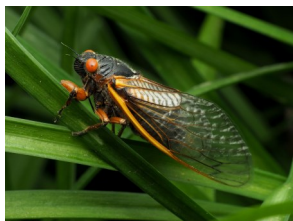
## **Periodical Cicadas:** **How to Protect your Trees and Shrubs**

*Source: Jonathan Larson, Entomologist*

Kentucky will be the epicenter for the emergence of Brood XIV of 17-year periodical cicadas this spring. Periodical cicadas have appeared in Western Kentucky counties over the past few years, but the largest emergence area for 2025 will occur across most of Central and Eastern Kentucky.

While these time-keeping, red-eyed insects are not harmful to humans or pets, their egg-laying habits could damage the branches of young trees and shrubs. Tree netting is the most effective, non-invasive way to protect your landscaping and fruit trees.

The 17-year periodical cicadas are expected to emerge from the soil to molt into their flying, adult form in late April to early May, when the soil warms to the mid-60's. Periodical cicadas emerge much earlier than annual cicadas and in greater numbers.



Cicadas do not bite or sting, and the feeding habits of the adults do not damage plants. Some may find the abundance of molted shells and loud, near deafening singing a nuisance, while others will enjoy this pageantry of nature. The periodical cicadas' choral song, however, is a cue to protect landscaping and orchards.

Female cicadas will lay their eggs into the new, lower branches of several species after mating: apple, arborvitae, ash, beech, berry and grape vines, crab apple, cherry, dogwood, hickory, holly, maple, lilacs, magnolia, oak, peach, pear, rose bushes, spirea and willows are the most likely targets.

The cicada's ovipositor is long and sharp, and they will inject 200 to 600 eggs into the stem tissue. This "flagging" may

cause the tender branches to snap. The fallen branch makes for a much shorter journey for the hatching nymphs from egg to soil but is not beneficial for the growing tree. Once the eggs hatch, the nymphs will feed on root sap, and a heavy population of nymphs in the soil may also impact the tree's root system.

While using insecticides may be less costly, the safest and most effective way to prevent tree and shrub damage is by using cicada netting, which prevents females from laying their eggs. Netting is suggested for use on new and smaller trees and should be installed when the cicadas begin to sing, about mid-May for most of the area. Trees that are established in the landscape—too tall to net for most people—will grow throughout the egg-laying period.

More information can be found at the University of Kentucky Martin-Gatton College of Agriculture, Food and Environment publication here: <https://entomology.ca.uky.edu/ef446>.

You can also contact your local Shelby County Extension office for more information on protecting trees and shrubs from cicadas.

## **When Bees Swarm**

Spring is the main time for honeybees to swarm and it's all a part of a beehive's natural biology. Each year, when there is plenty of food, the hive is healthy, and they are running out of space, a sizable portion of a hive (as well as the old queen) will break off and go looking for a new home. They leave behind only a skeleton crew of workers and a few cells of developing queens. When those young queens hatch, they then fight until only one is left as the new queen of the hive.

Swarms can be a bit scary to look at since the cluster can contain several thousand worker bees. Swarms are not typically aggressive, however, and only stick around for a few hours to a few days. They have been known, however, to sometimes park themselves in inconvenient places.



If you believe you've found a swarm of bees, you may call the Extension Office at (502) 633-4593 and we can get you in touch with a local beekeeper who can come and take them. We highly recommend providing pictures of the swarm when you call so our local beekeepers are not going in blind.



## **Master Gardeners Association**

*May 10th & June 27th*

The Master Gardeners Association typically meets at the Extension Office on every **2nd Tuesday of the month at 6:30 p.m.** However, for the Month of May and June, the regular monthly meetings are being replaced by the Plant Sale on May 10th and the annual Picnic on June 27th.

## **Master Gardener Plant Sale**

*May 10th, 9 - 1 p.m.*

The **Master Gardener Plant Sale** will be taking place on **May 10th** this year between **9 a.m. and 1 p.m.** We will have perennial plants, a local honey producer, and herbs. Additionally, the local high school will be selling their annuals and the 4-H horse club will be trading tack and selling concessions.

## **Beekeepers Association**

*May 22nd & June 26th*

The **Beekeepers Association** meets at **7 p.m. on the 4th Thursday of the month.** Regardless of whether you are brand new to beekeeping and are looking to learn or have been a beekeeper for many years, the Beekeeper's Association welcomes everyone. Come learn about what's relevant in local beekeeping, ask questions, find a mentor, look to buy/offer to sell bees, and expand upon your own knowledge and beekeeping practices.

## **May**

## **Living with Alpha-gal Syndrome**

*May 29th, 7 - 8:30 p.m.*

The University of Kentucky is hosting a webinar on May 29th from 7-8:30 p.m. discussing the surging prevalence of tick bites and AGS (red meat allergy). Learn more about red meat allergy and how to reduce your risk.

The webinar can be viewed from home by signing up with the included QR code. Alternatively, you may join us at the Shelby County Extension Office where we will be hosting a watch party for the event. Refreshments will be included.



## **Basics of Soils**

*May 21st, 5:30 p.m.*

Learn about soil basics, from understanding what soil is made of and how it impacts Kentucky to learning how to take, read, and apply a soil test. Please sign up at the Extension Office at (502) 633-4593.

## **Landscaping with Native Plants**

*May 27th, 6-7 p.m.*

Join us for an hour program on landscaping with native plants. Learn about the importance of native plants and how you might incorporate them into your own gardens and landscaping. We'll showcase over 30 different species. Please sign up at the Extension Office at (502) 633-4593.

## **June**

## **Invasive Pests Series**

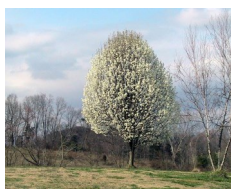
*June 12, 19, and 26 at 6 p.m.*

Join us on a new 3-week series where we go over what's new and relevant in invasive species. In each class we'll dive into 3 different invasive plants or insects and discuss their current and potential impact to our area, how to identify them, remove them, and what they can be replaced with. Each session can be taken separately. Please sign up for your chosen session(s) at the Office (502) 633-4593.



**June 12:** Bush Honeysuckle, Spotted Lanternfly, Winter-creeper

**June 19:** Tree of Heaven, Emerald Ash Borer, Red Imported Fire Ants



**June 26:** Bradford Pear, Spotted Wing Drosophila, Spongy Moth



Articles By:  
Skye Drane  
Horticulture

*A. Skye Drane*

## Shelby County Fair

The Shelby County Fair will be **June 9-14**. We are looking forward to showcasing all of the great project work of our 4-H members.

All 4-H project entries will be accepted from 11 a.m. to 5 p.m. at Floral Hall on Monday, **June 9**. The doors will be locked at 5 p.m. and late entries cannot be accepted. If you would like to pre-enter items, please call the Extension Office. Please check the Fair Catalog for rules and information. Several categories have changes, so be sure to review the fair catalog.

- We have several 4-H'ers that exhibit Dairy Cattle. Come check them out at the Shelby County Dairy Show. The show will be held on **Monday, June 9** at 5 p.m. and it is an open show. The Shelby District Dairy Show will be held at 9 a.m. on **Tuesday, June 10**.
- The Youth Rabbit Show will be held on **Wednesday, June 11** at 3 p.m. Rabbits are great for children that want an animal project but don't have space for livestock. Come and check out all the breeds and varieties that 4-H'ers exhibit at the rabbit show.
- A 4-H Poultry Show will be held on **Wednesday, June 11** at 5 p.m. for youth with chickens, ducks or other poultry they would like to exhibit. Chickens are quickly becoming a very popular 4-H project.
- The Hog, Sheep and Goat shows will be held on **Friday, June 13** beginning at 8 a.m. with the hog show. The lambs will show at 1:30 p.m. and the goats at 3:30 p.m. We have several 4-H members that will be showing throughout the day.
- The Open Beef Show will be held on **Saturday, June 14** at 10 a.m. The Heifer Show is open to all exhibitors. There will be a Steer Show for Shelby County Livestock Club members only, but open steer classes will be offered as well.



JUNE 9-14

### Shelby County 4-H Projects at the Fair

4-H Fair Project Catalogs are available at the Extension Office. It details all of the categories that 4-H members can enter projects in at the county fair. I encourage 4-H members to pick up a catalog and start planning your fair

entries now. The official Shelby County Fair Catalog will be available in May as an insert in the Sentinel News. We also have 4-H Fair Recipe Books available at the Extension Office for all of the food categories.

## Shelby County 4-H Communication Contest Results

Congratulations to the youth that participated in the Shelby County Communication Contest. County winners advanced to the Area Communication Contest on April 26. Area winners will have the opportunity to compete in the State 4-H Speech and Demonstration Contests in July in Clark County. Good Luck to those 4-H'ers!



### JR Health Demonstration

Jenna Smith Blue/Champion

### SR Health Demonstration

Braelyn Willen Blue/Champion

### JR Family & Consumer Sciences

Luke Smith Blue/Champion

### JR Clothing & Textiles

Brennah Willen Blue/Champion

### JR Digital Media Presentation

Noah Smith Blue/Champion

### JR Animal Science Demonstration

Lane McCall Blue

Henry Miller Blue/Champion

### 16 Year Old Speech

Braelyn Willen Blue/Champion

### Mock Job Interview

Wade Browning Blue

Braelyn Willen Blue/Champion

Shelby County 4-H'ers advancing to the State Communication Contest are: Braelyn Willen (Speech and Demonstration), Brennah Willen, Luke Smith, Jenna Smith, and Henry Miller. The State Communication Contest is July 12 in Clark County.

## Shelby County Youth Livestock Auction

The Shelby County Youth Livestock Foundation has been meeting to begin planning the 2025 Shelby County Youth Livestock Showcase & Auction. Any youth in 4-H and/or FFA with a project can participate in the auction including dairy, beef, sheep, goats, and rabbit or poultry projects. The auction is planned for September 4, 2025. Interested families need to

attend an informational meeting about auction guidelines on Thursday, May 1 or Monday, July 14th at 6 p.m. at the Shelby County Extension Office. This years event will include an interview portion and record book judging. If you have any questions please reach out to the Shelby County Youth Livestock Foundation or contact the Shelby County Extension Office. You can view the Foundation's Facebook Page by searching "Shelby County Youth Livestock Foundation Showcase & Auction".



## Kentucky 4-H Horse Show

The Kentucky 4-H State Horse Show will be held June 28-July 3 at the KY Fair and Expo Center. All 4-H'ers must attend at least one show or clinic to qualify to attend the State Horse Show in addition to the required 6 hours of education. A **Verification Form** is required and should be signed by the Show or Clinic Secretary/Manager of the event you attend. The **Project Horse Eligibility Form** must be completed online by May 15. The **State Show Entry Form** must be completed by June 9 and hopefully will be done electronically this year. A negative Coggins test, proof of Flu/Rhino vaccine, health papers, photo release, photos of the project horse, and signed verification form are required. Please note that June 14 is the last day that Flu/Rhino can be administered to participate in the State Horse Show.

More information can be found at the State 4-H Horse Website at <https://afs.ca.uky.edu/4h-youth/horse/show-rules-regulations-resources>

## 2025 YAIP

The Shelby County Ag Development Board approved funding for the YAIP program for 2025. This cost share program allows youth to receive matching funds up to \$500 for agricultural related projects. This is a 50/50 match. For example, if a youth spends \$1000, they are eligible to receive up to \$500. Funds may be prorated, depending on the number of applicants. Project areas include: Ag Diversification, Animal Production, Forage

Improvement and Showmanship.

If the State Board approves our request, applications should be available on June 1. 2025 YAIP would cover purchases made between 12/24/24 and 7/31/25. Completed applications would be due by August 1 and all receipts must be submitted by September 1 to receive reimbursement.

Receipts must be provided for all purchases. You may not be reimbursed for items that are paid for with cash. Checks and credit or debit cards are accepted. You must submit your bank statements showing that checks have cleared the bank or credit card statement was paid.

Applications will be available and any questions will be answered during an Informational Meeting on Tuesday, June 3rd at 5:30 p.m. at the Extension Office. This meeting is not mandatory to receive funding.



## 4-H Camp

4-H Camp paperwork has been sent out to everyone registered for 4-H Camp. **All paperwork and payments are due by May 9.** Plan on attending the 4-H Parent/Camper Orientation on May 13 at 6:30 p.m. at the Extension Office.

The Camp Newsletter will provide important information. Please read carefully and if you have questions, please contact the Extension Office.

We will notify youth that are on the waiting list if a spot becomes available. If you know you cannot go to camp and have reserved a spot, please let us know as soon as possible. We have several youth on a waiting list.

## 4-H Summer Intern

We are excited to welcome Bri Horan as our Extension Summer Intern this summer. She will be at 4-H Camp, Fair and other Extension programs this summer. If you see her, please say hello and make her feel welcome!



Articles By:  
Regina Browning  
Cooperative Extension Agent for 4-H Youth Development

Candice Hollingsworth  
Cooperative Extension Agent for 4-H Youth Development

4

~

H

Y

O

U

T

H

D

E

V

E

L

O

P

M

E

N

T

## **Reducing unwanted aquatic plant and algae growth in ponds**

Source: Forrest Wynne, extension aquaculture specialist,  
Kentucky State University

During the spring and summer, we get a lot of questions at the extension office from pond owners about how to control unwanted aquatic plant and algae growth in their ponds. Here are some ideas to help reduce the amount of these unwanted plants in your pond.

Whether constructing a new pond or renovating an old one, minimize shallow areas of less than 2.5 or 3 feet around the shoreline to prevent unwanted plant growth. Aquatic plant and algae typically establish first in these shallow areas before extending toward the center of the pond.

If you are installing a new pond, make sure it is located away from watershed runoff consisting of nutrients from fertilizers, manure and septic wastewater. These promote unwanted aquatic growth and may pose hazards to aquatic life.

If possible, construct a pond near a source of electricity. You may want to install electric surface aeration devices. You can install these in shallow ponds that are 10 feet or less in depth. Deeper ponds may benefit from the installation of a diffused aeration system. Air is pumped through hoses from a compressor on the pond bank to air stones located on the pond bottom. Both surface aerator and diffused aeration systems help circulate pond nutrients and reduce stagnant water that often encourages plant or algae growth.

Adding agricultural limestone to ponds constructed in acidic soils will raise the pH of the bottom mud and free up phosphorus and other nutrients. These nutrients will encourage the development of beneficial plankton blooms and enhance fish growth. Pond soils may be submitted for pH testing and liming requirements. Use the same nutrient amounts recommended for alfalfa fields. Total alkalinity of pond water may be tested, and samples ranging between 50 - 100 mg/L are good for fish growth.

Aquatic dyes can be added to impart color to the pond water and help reduce sunlight penetration to the pond bottom. This may help control plant or algae growth. Unfortunately, aquatic dyes are not effective in controlling unwanted growth in shallow water. Dyes may best be added to a pond when water retention time is greatest, often in the middle summer and early fall.

Triploid grass carp are legal to stock into private Kentucky ponds. They will control soft-stemmed plants and branched algae that are easily

digested. The fish contain an extra set of chromosomes which makes them unable to reproduce. Grass carp 10 inches long or larger should be stocked into ponds containing adult largemouth bass to avoid predation. Grass carp grow quickly and should be restocked every few years as younger, smaller fish control vegetation better than larger fish. Adult fish can grow up to 20 pounds or more. They are powerful and can be dangerous to handle.

Both liquid and granular algaecides and herbicides are available to temporarily control unwanted aquatic plant and algae growth. Aquatic plants and algae must be correctly identified before these chemicals are applied. Follow all label recommendations and observe all application restrictions.

Your local extension agent can help you identify aquatic plants and algae.

## **Better pastures equals healthier herds**

Source: Christopher Teutsch, UK extension associate  
professor and forage specialist

Rotational stocking, often referred to as rotational grazing, is a powerful technique that can bring a range of benefits to all types of livestock as well as the land. By dividing large pastures into smaller paddocks and moving animals through them on a planned schedule, farmers can give each grazed area a rest period, allowing for regrowth of leaf area lost to grazing and replenishment of stored carbohydrates that were utilized to fuel regrowth. When producers shift from continuous grazing to a rotational system, they often see dramatic improvements in pasture productivity, soil health and even animal behavior.

One of the primary advantages of rotational grazing is enhanced pasture productivity. When animals graze one paddock at a time and then move on, the plants in the grazed paddock have a chance to rebound. During this rest period, forage plants can restore their carbohydrate reserves and recover more completely from being grazed. This not only boosts the quantity of forage available over time but also maintains better and more consistent nutritional quality. In contrast, continuous grazing—where livestock stay in the same pasture all season—often leads to overgrazing, weaker plants that are more susceptible to stresses and progressively lower yields.

Improved nutrient distribution is another significant plus. Rotating animals means they



spread manure evenly around the paddocks rather than depositing it heavily in just a few favorite areas (like watering or resting spots). Because manure is a natural fertilizer, more uniform distribution helps replenish the soil and encourages consistent plant growth. A continuous grazing system, on the other hand, may result in “hot spots” of manure accumulation. This concentrated nutrient load can negatively impact both plant growth and the environment around those areas.

A well-managed rotational grazing system also offers increased drought tolerance. With planned rest periods, plants develop deeper, stronger root systems. These robust roots allow the plants to access water further below the surface, which can be crucial during dry spells. In a continuously grazed pasture, plants rarely get the downtime they need to fully recover, leaving them more vulnerable to stress when rainfall is scarce. As a result, fields under rotational management often grow longer into drought periods and recover faster when conditions improve.

Another practical benefit of rotational stocking is easier animal handling. When paddocks are set up with well-designed lanes and strategically placed water sources, moving livestock becomes more straightforward. In addition, more frequent contact with animals allows livestock to associate human interaction with something positive...fresh grass. This greatly reduces the stress and chaos commonly associated with animal handling in open pastures. Properly placed lanes can also help control erosion, ensuring that foot traffic and machinery movement do not damage sensitive areas of the pasture.

Rotational stocking can be a game-changer for anyone looking to optimize pasture health and livestock performance. By giving plants time to recover, distributing nutrients more evenly, building drought resilience and streamlining animal handling, rotational grazing can deliver long-lasting improvements to farm operations. Whether you’re raising cattle, sheep, goats or other grazing animals, this strategy can help you optimize productivity and at the same time protect land and water resources for future generations.

Contact the Shelby County Extension office for more information on how to maintain healthy pastures.

## Kentucky Woodland Owners Short Course

### SIX WEBINARS & A FIELD SESSION WITH RESOURCE EXTRAVAGANZA

This program aids Kentucky woodland owners in forest resource management, offering online and in-person options. Live session recordings will be available with participants able to choose between online-only or a field session, each featuring a regional Woodland Owner Resource Extravaganza.

- ⇒ June 10-26, Online, 7-8:30 p.m. ET
- ⇒ July 19, Whitley Co. Field Session
- ⇒ August 16, Pendleton Co. Field Session

Online only: \$10/person  
Online & Field Session: \$30/single or \$45/couple

To register: [www.KYWOSC.org](http://www.KYWOSC.org)

Meet the WOSC partners at  
<https://wosc.ca.uky.edu/partners>

### What is driving the yield in UK corn and wheat yield contests?

New information is available from information collected over several years of the Kentucky Corn and Wheat Yield Contests. Dr. Shamim has compiled and analyzed multiple sets of data to determine trends affecting yield.

The compilations and results are available here:

#### **Overview of Kentucky Wheat Yield Contests, 2015–2024**

<https://publications.ca.uky.edu/pr-863>

#### **Overview of Kentucky Corn Yield Contests, 2019–2024**

<https://publications.ca.uky.edu/pr-864>

Articles By:  
Corinne F. Belton  
Cooperative Extension Agent for  
Agriculture and Natural Resources

*Corinne F. Belton*

# Shelby County Master Gardeners

## Plant Sale

**Saturday, May 10, 2025**  
**9 a.m. - 1 p.m.**

The Master Gardeners are proud to  
present home grown perennials,  
herbs, and local honey.

Shelby County Extension Office  
1117 Frankfort Road  
Shelbyville, KY 40065



**Begins**  
**May 1, 2025**

*A 7-week walking program.*  
*Ends June 18*

*Register by April 30*

*A FREE program to support individuals, families, and teams to walk and move more!*



Register now!  
**<https://tinyurl.com/3dfkmjvj>**

## MAY

FCS	1	Walking Kentucky Begins (ends June 18)	
4-H	1	Youth Livestock Auction Informational Meeting, 6 p.m.	Extension Office
FCS	3	First Saturday Walkabout, 8 - 8:30 a.m.	Family Activity Center
FCS	6	Sewing Circle, 1 - 8 p.m.	Extension Office
HORT	10	Master Gardener Plant Sale 9 a.m. -1 p.m.	Extension Office
4-H	12	Fur & Feathers Rabbit & Poultry Club, 6:30 p.m.	Extension Office
4-H	13	Camper/Parent Orientation, 6 p.m.	Extension Office
4-H	13	Zappy Zippers 4-H Sewing Club, 4-6 p.m.	Extension Office
4-H	15	Imagination Club, 4-6 p.m.	Extension Office
FCS	17	Quilt Registry, 10 a.m. - 4 p.m.	Extension Office
FCS	21	Laugh and Learn Playdate, 5 - 6 p.m.	Extension Office
HORT	21	Basics of Soils, 5:30p.m.	Extension Office
HORT	22	Beekeepers Association Meeting, 7 p.m.	Extension Office
4-H	22	Cloverbuds, 6 p.m.	Extension Office
FCS	23	Community Baby Shower, 11 a.m. - 1 p.m.	Conference Center
4-H	23	Saddles N Spurs Horse Club, 6:30 p.m.	Extension Office
FCS	27	Wits Workout, 10 - 11 a.m.	Extension Office
HORT	27	Landscaping with Native Plants, 6 p.m.	Extension Office
FCS	29	Homemaker Annual Meeting	Extension Office
FCS	29	The KY Derby: A Celebration of KY and its Heritage, 11 a.m.	Extension Office
HORT	29	Living with Alpha-gal Watch Party, 7 p.m.	Online & Extension Office

## JUNE

FCS	3	Sit-n-Sew, 9 a.m. - 4 p.m.	Extension Office
4-H	10-13	4-H Teen Conference (Lexington)	University of KY
HORT	12	Invasive Pests Series, 6 p.m.	Extension Office
HORT	19	Invasive Pests Series, 6 p.m.	Extension Office
FCS	24	Wits Workout, 10 - 11 a.m.	Extension Office
FCS	25	Laugh and Learn Playdate, 5 - 6 p.m.	Extension Office
HORT	26	Beekeepers Association Meeting, 7 p.m.	Extension Office
HORT	26	Invasive Pests Series, 6 p.m.	Extension Office
FCS	26	Home Canning Workshop, 10 a.m. - 12 p.m.	Extension Office
FCS	27	Kids Renaissance Health Fair, 2 - 5 p.m.	KY Renaissance Fair

### **C.A.I.P. News**

**Approved Producers:** The project completion deadline for the 2024 program was April 16th. Over half of the projects were received during the last two weeks, so please be patient with me as I process these. I will contact you with an open items list or if I have questions. Otherwise, I will send you a text message when your check is ready to be picked up.

**Waiting List Producers:** I will notify you by mail if funds become available for you.

Evelyn White-Shelby County CAIP Administrator (502) 321-8757

### KEY

**4-H**  
4-H Youth  
Develop-  
ment

**AG**  
Agriculture

**HORT**  
Horticul-  
ture

**FCS**  
Family &  
Consumer



Cooperative Extension Service  
SHELBY COUNTY  
1117 Frankfort Road  
Shelbyville, KY 40065-9447

RETURN SERVICE REQUESTED

The Martin-Gatton College of Agriculture, Food and Environment is an Equal Opportunity Organization with respect to education and employment and authorization to provide research, education information and other services only to individuals and institutions that function without regard to economic or social status and will not discriminate on the basis of race, color, ethnic origin, national origin, creed, religion, political belief, sex, sexual orientation, gender identity, gender expression, pregnancy, marital status, genetic information, age, veteran status, physical or mental disability or reprisal or retaliation for prior civil rights activity.

Reasonable accommodation of disability may be available with prior notice. Program information may be made available in languages other than English.

Inquiries regarding compliance with Title VI and Title VII of the Civil Rights Act of 1964, Title IX of the Educational Amendments, Section 504 of the Rehabilitation Act and other related matter should be directed to:

Equal Opportunity Office, Martin-Gatton College of Agriculture, Food and Environment, University of Kentucky, Room S-105, Agriculture Science Building North, Lexington, Kentucky 40546,

the UK Office of Institutional Equity and Equal Opportunity, 13 Main Building, University of Kentucky, Lexington, KY 40506-0032 or

US Department of Agriculture, Office of the Assistant Secretary for Civil Rights, 1400 Independence Avenue, SW, Washington, D.C. 20250-9410.